

WHERE TO LOCATE SMOKE DETECTORS: ⚙

Detectors are to be located on every level of a residence, basement, first floor, second floor, excluding crawl spaces and unfinished attics, and in every separate sleeping area, between sleeping areas and living areas such as the kitchen, garage, basement or utility room. In homes with only one sleeping area on one floor, a detector is to be put in the hallway outside the bedrooms as shown in Figure 1. In single floor homes with two separate sleeping areas, two detectors are required, outside each sleeping area as shown in Figure 2. In multi-level homes, detectors should be located outside sleeping areas and at every finished level of the home as shown in Figure 3. Basement level detectors should be located in the bottom of basement stairwells as shown in Figure 4.

WHERE NOT TO LOCATE SMOKE DETECTORS:

To avoid false alarms and/or improper operation, avoid installation of smoke detectors in the following areas:

- Kitchens: smoke from cooking may cause a nuisance alarm.
- Bathrooms: excessive steam from a shower may cause a nuisance alarm.
- Forced air ducts used for heating or air conditioning or paddle fans: air movement may prevent smoke from reaching detectors.
- Near furnaces of any type – air and dust movement and normal combustion products may cause a nuisance alarm.
- The “Dead Air” space where the ceiling meets the wall, as shown in Figure 5.
- The peak of an “A” frame type of ceiling “Dead Air” at the top may prevent smoke from reaching the detector.

GENERAL INSTALLATION OF CO DETECTORS: ⊗

CO detectors shall be located in every sleeping area as Figure 1, Figure 2, Figure 3 and Figure 4 below. All CO detectors should be installed in a competent manner and in accordance with the manufacturer’s installation instructions. All CO alarms or detectors should be located and mounted so that accidental operation will not be caused by jarring or vibration. All CO alarms or detectors should be supported independently of their attachment to wires.

FIGURE 1

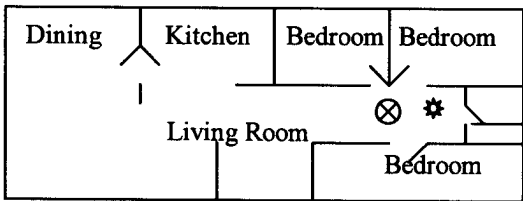


FIGURE 2

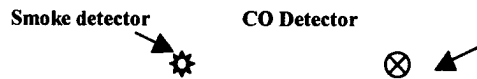
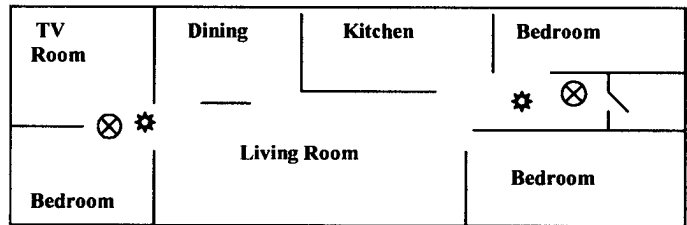


FIGURE 3

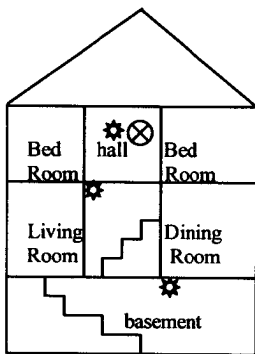


FIGURE 4

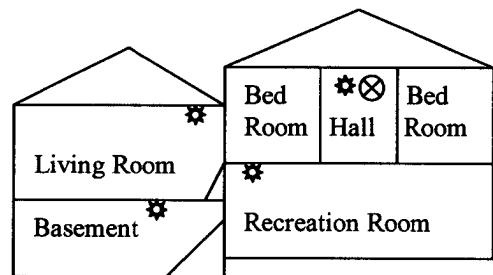
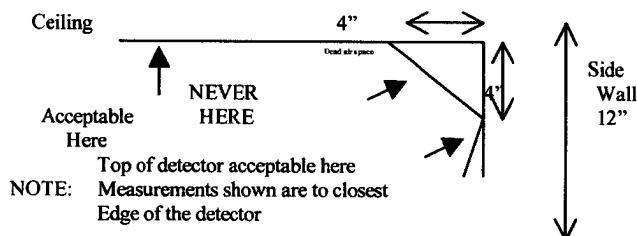


FIGURE 5



Remember: Detectors over ten years old – should be replaced!