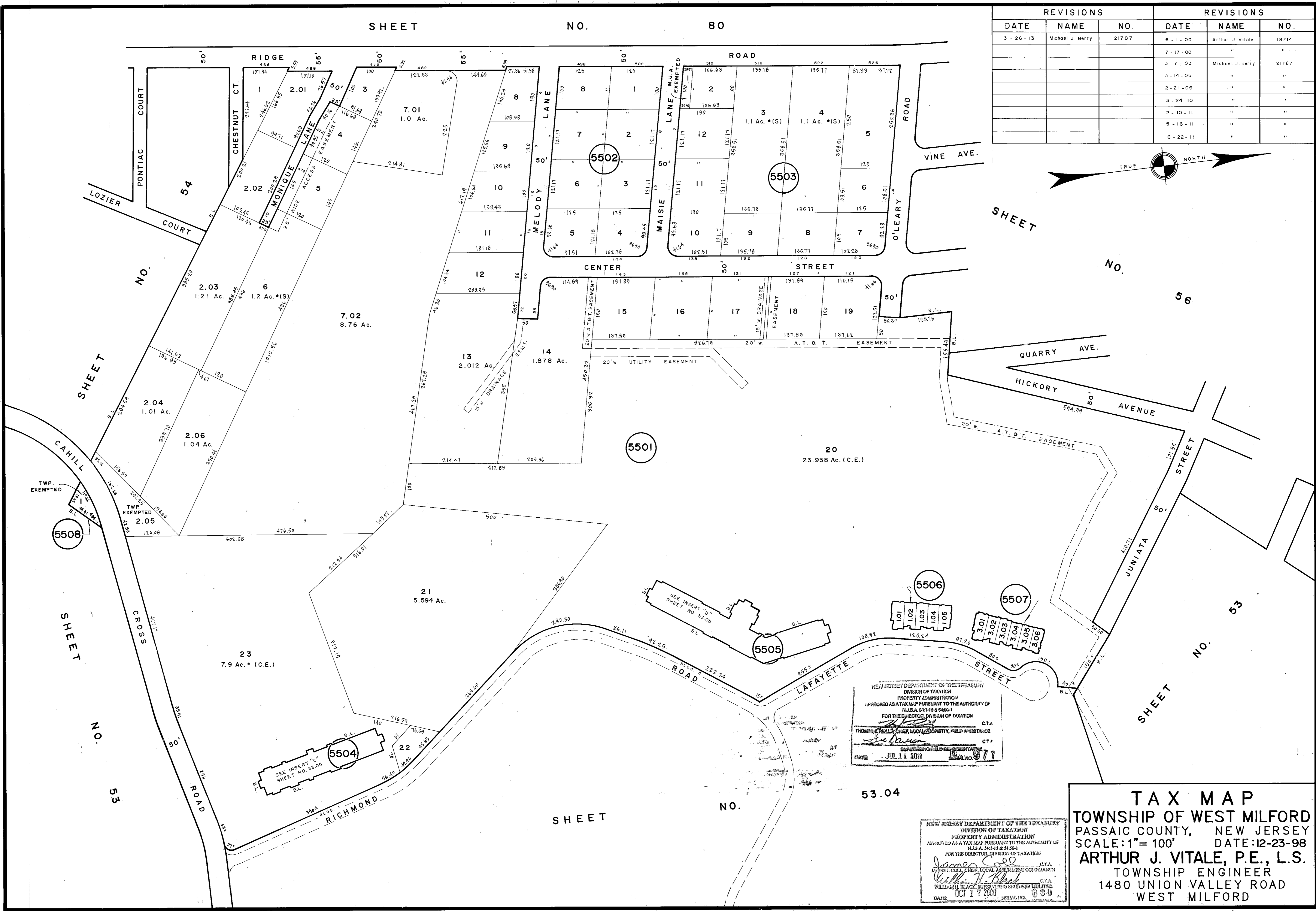
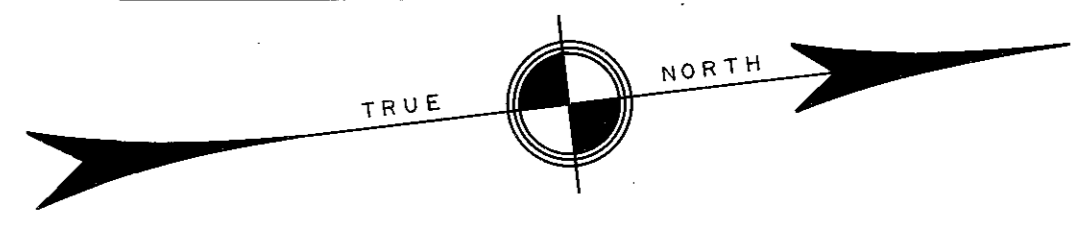


SHEET NO. 80

REVISIONS			REVISIONS		
DATE	NAME	NO.	DATE	NAME	NO.
3-26-13	Michael J. Berry	21787	6-1-00	Arthur J. Vitale	18714
			7-17-00	"	"
			3-7-03	Michael J. Berry	21787
			3-14-05	"	"
			2-21-06	"	"
			3-24-10	"	"
			2-10-11	"	"
			5-16-11	"	"
			6-22-11	"	"



NEW JERSEY DEPARTMENT OF THE TREASURY
 DIVISION OF TAXATION
 PROPERTY ADMINISTRATION
 APPROVED AS A TAX MAP PURSUANT TO THE AUTHORITY OF
 N.J.S.A. 54:1-13 & 54:2-1
 FOR THE DIRECTOR, DIVISION OF TAXATION
 THOMAS J. COLLIER, CHIEF LOCAL ASSESSMENT COLLECTOR
 DATE: JUL 17 2011

NEW JERSEY DEPARTMENT OF THE TREASURY
 DIVISION OF TAXATION
 PROPERTY ADMINISTRATION
 APPROVED AS A TAX MAP PURSUANT TO THE AUTHORITY OF
 N.J.S.A. 54:1-13 & 54:2-1
 FOR THE DIRECTOR, DIVISION OF TAXATION
 JAMES J. COLLIER, CHIEF LOCAL ASSESSMENT COLLECTOR
 WILLIAM H. BLAZE, SUPERVISING ENGINEER UTILITIES
 DATE: OCT 17 2000 SERIAL NO. 630

TAX MAP
 TOWNSHIP OF WEST MILFORD
 PASSAIC COUNTY, NEW JERSEY
 SCALE: 1" = 100' DATE: 12-23-98
ARTHUR J. VITALE, P.E., L.S.
 TOWNSHIP ENGINEER
 1480 UNION VALLEY ROAD
 WEST MILFORD