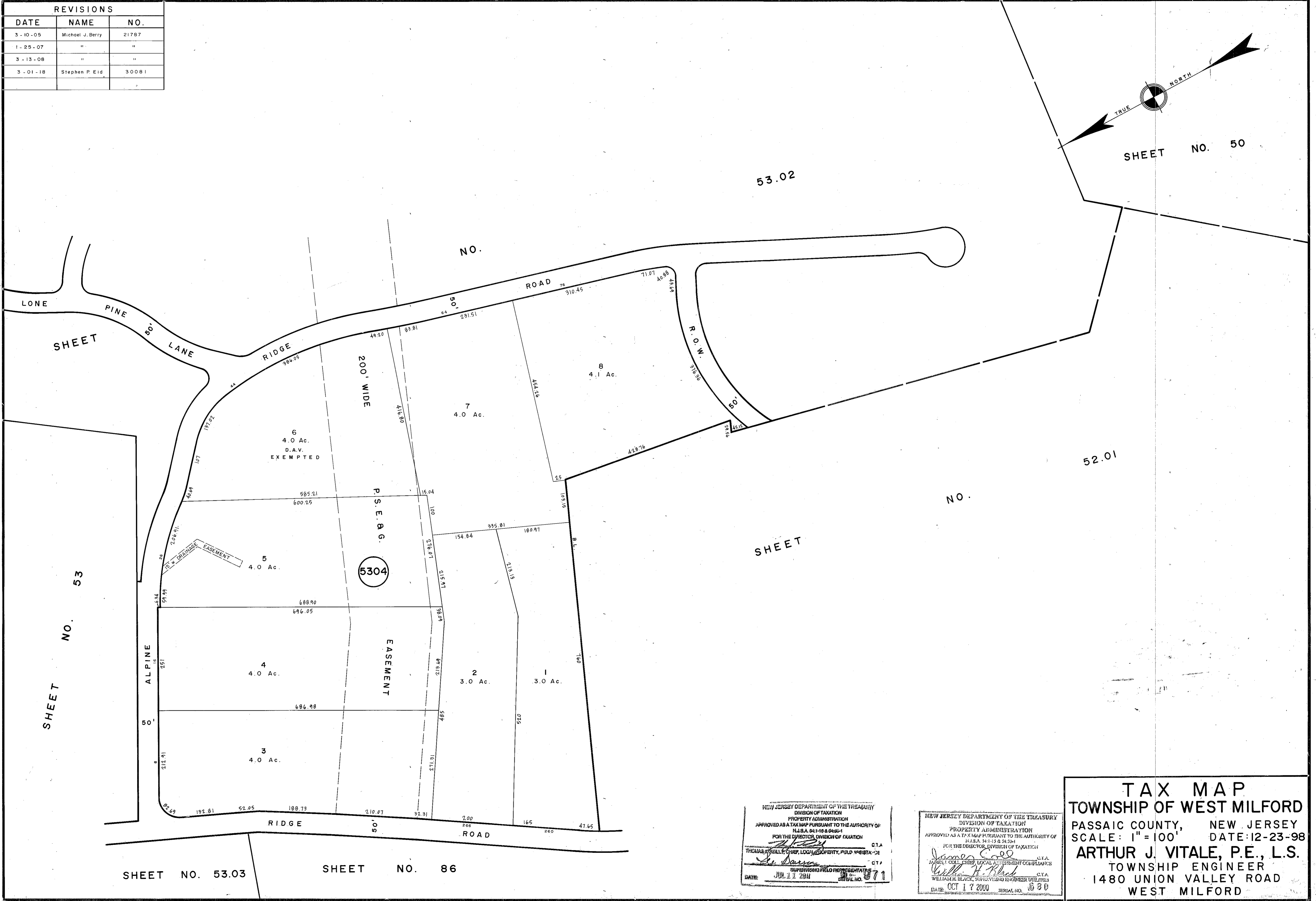


REVISIONS		
DATE	NAME	NO.
3-10-05	Michael J. Berry	21787
1-25-07	"	"
3-13-08	"	"
3-01-18	Stephen P. Eid	30081



NEW JERSEY DEPARTMENT OF THE TREASURY  
 DIVISION OF TAXATION  
 PROPERTY ADMINISTRATION  
 APPROVED AS A TAX MAP PURSUANT TO THE AUTHORITY OF  
 N.J.S.A. 54:1-10 & 54:1-11  
 FOR THE DIRECTOR, DIVISION OF TAXATION  
 THOMAS J. REILLY, CHIEF, LOCAL PROPERTY, FIELD ASSISTANT  
 DATE: JUL 17 2011

NEW JERSEY DEPARTMENT OF THE TREASURY  
 DIVISION OF TAXATION  
 PROPERTY ADMINISTRATION  
 APPROVED AS A TAX MAP PURSUANT TO THE AUTHORITY OF  
 P.L.R.A. 54:1-12 & 54:1-13  
 FOR THE DIRECTOR, DIVISION OF TAXATION  
 JAMES J. COLL, CHIEF, LOCAL ASSESSMENT COMPLIANCE  
 WILLIAM H. BLACK, SUPERVISING ENGINEER UTILITIES  
 DATE: OCT 17 2000

**TAX MAP**  
**TOWNSHIP OF WEST MILFORD**  
 PASSAIC COUNTY, NEW JERSEY  
 SCALE: 1" = 100' DATE: 12-23-98  
**ARTHUR J. VITALE, P.E., L.S.**  
 TOWNSHIP ENGINEER  
 1480 UNION VALLEY ROAD  
 WEST MILFORD