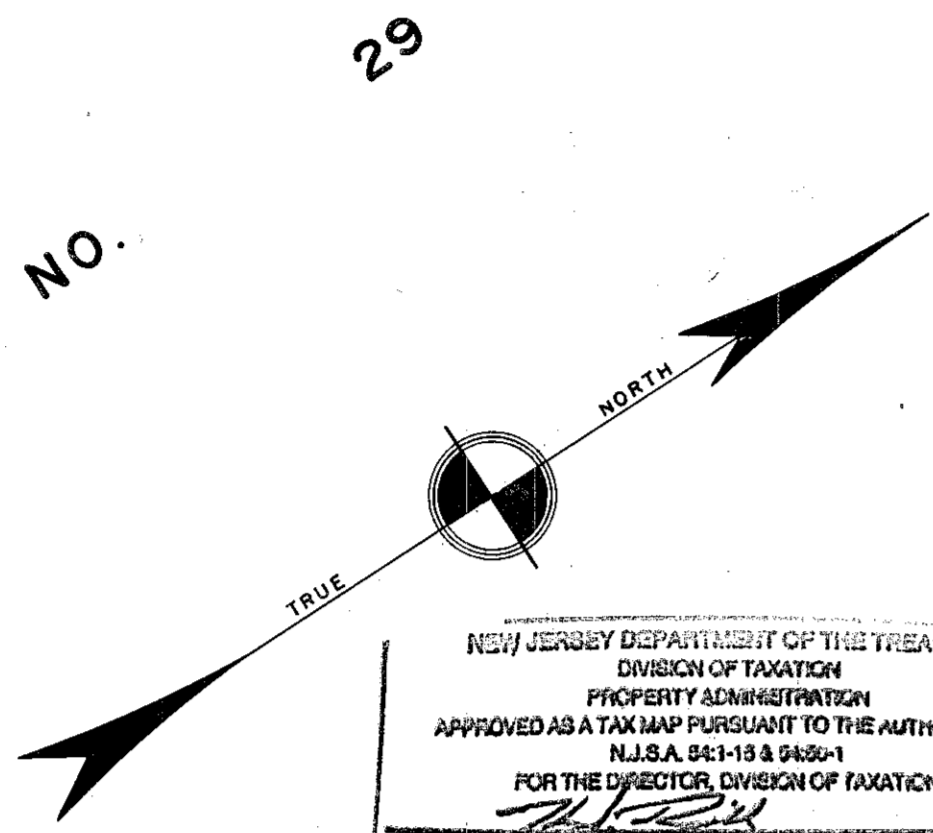


NEW JERSEY DEPARTMENT OF THE TREASURY
 DIVISION OF TAXATION
 LOCAL PROPERTY TAXATION
 APPROVED AS A TAX MAP PURSUANT TO THE
 PROVISIONS OF CHAPTER 175, LAWS OF 1910, ETC.
 FOR THE SUPERVISOR, DIVISION OF TOWNSHIP

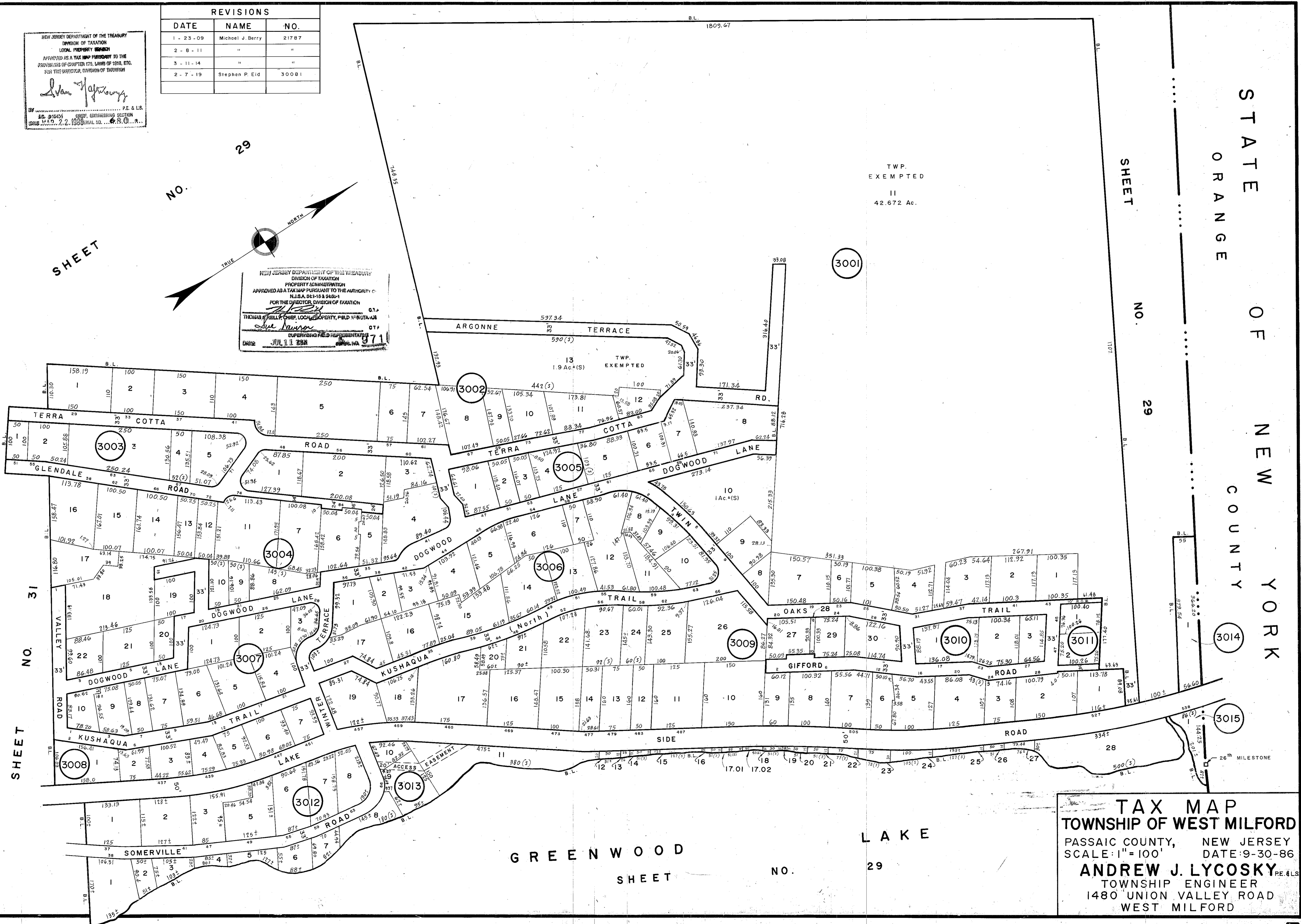
John J. Lyons
 P.E. & L.S.
 REG. NO. 3503 ENGINEERING SECTION
 2002 M.D. 2.2.1988 SERIAL NO. 6880

REVISIONS		
DATE	NAME	NO.
1 - 23 - 09	Michael J. Berry	21787
2 - 8 - 11	"	"
3 - 11 - 14	"	"
2 - 7 - 19	Stephen P. Eid	30081



NEW JERSEY DEPARTMENT OF THE TREASURY
 DIVISION OF TAXATION
 PROPERTY ADMINISTRATION
 APPROVED AS A TAX MAP PURSUANT TO THE AUTHORITY OF
 N.J.S.A. 84:1-13 & 84:2-1
 FOR THE DIRECTOR, DIVISION OF TAXATION

Thomas J. Kelly
 SUPERVISING FIELD REPRESENTATIVE
 DATE: JUL 11 2008



SHEET NO. 29

SHEET NO. 31

SHEET NO. 28

SHEET NO. 29

STATE OF NEW YORK
ORANGE COUNTY

TWP. EXEMPTED
II
42.672 Ac.

3001

3002

3005

3004

3006

3007

3009

3010

3011

3014

3015

3008

3012

3013

GREENWOOD

LAKE

SHEET NO. 29

TAX MAP
TOWNSHIP OF WEST MILFORD
 PASSAIC COUNTY, NEW JERSEY
 SCALE: 1" = 100' DATE: 9-30-86
ANDREW J. LYCOSKY P.E. & L.S.
 TOWNSHIP ENGINEER
 1480 UNION VALLEY ROAD
 WEST MILFORD