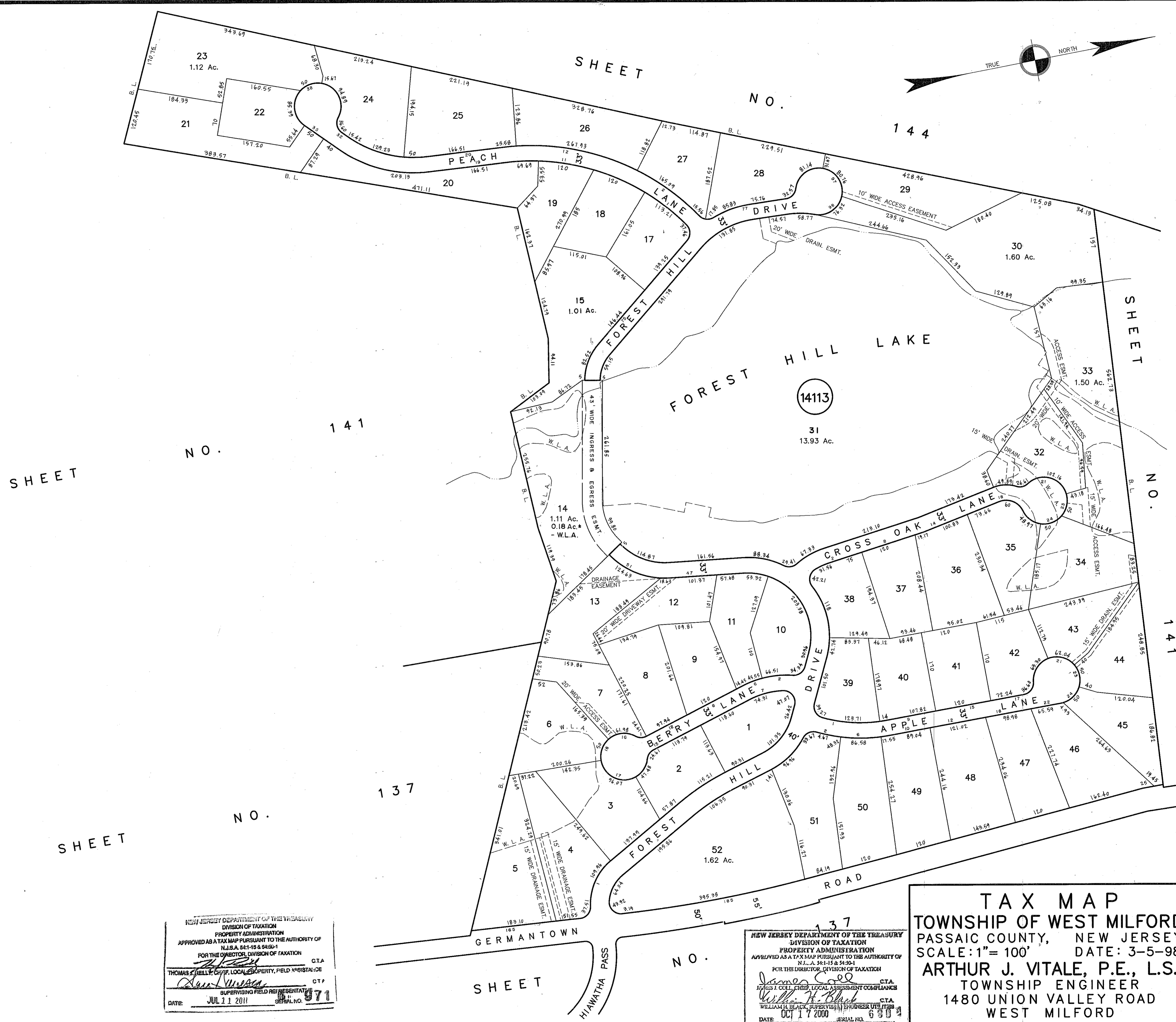


REVISIONS		
DATE	NAME	NO.
3-15-05	Michael J. Berry	21787
4-10-06	"	"
3-17-08	"	"
3-04-09	"	"
1-27-11	"	"
4-27-18	Stephen P. Eid	30081



NEW JERSEY DEPARTMENT OF THE TREASURY  
 DIVISION OF TAXATION  
 PROPERTY ADMINISTRATION  
 APPROVED AS A TAX MAP PURSUANT TO THE AUTHORITY OF  
 N.J.S.A. 54:1-16 & 54:1-17  
 FOR THE DIRECTOR, DIVISION OF TAXATION  
 THOMAS J. KELLY, CHIEF LOCAL ASSESSMENT COMPLIANCE  
 SUPERVISING FIELD REPRESENTATIVE  
 DATE: JUL 11 2011 SERIAL NO. 971

NEW JERSEY DEPARTMENT OF THE TREASURY  
 DIVISION OF TAXATION  
 PROPERTY ADMINISTRATION  
 APPROVED AS A TAX MAP PURSUANT TO THE AUTHORITY OF  
 N.J.S.A. 54:1-16 & 54:1-17  
 FOR THE DIRECTOR, DIVISION OF TAXATION  
 James J. Coll, CHIEF LOCAL ASSESSMENT COMPLIANCE  
 SUPERVISING FIELD REPRESENTATIVE  
 DATE: OCT 17 2000 SERIAL NO. 6303

**TAX MAP**  
 TOWNSHIP OF WEST MILFORD  
 PASSAIC COUNTY, NEW JERSEY  
 SCALE: 1" = 100' DATE: 3-5-98  
 ARTHUR J. VITALE, P.E., L.S.  
 TOWNSHIP ENGINEER  
 1480 UNION VALLEY ROAD  
 WEST MILFORD