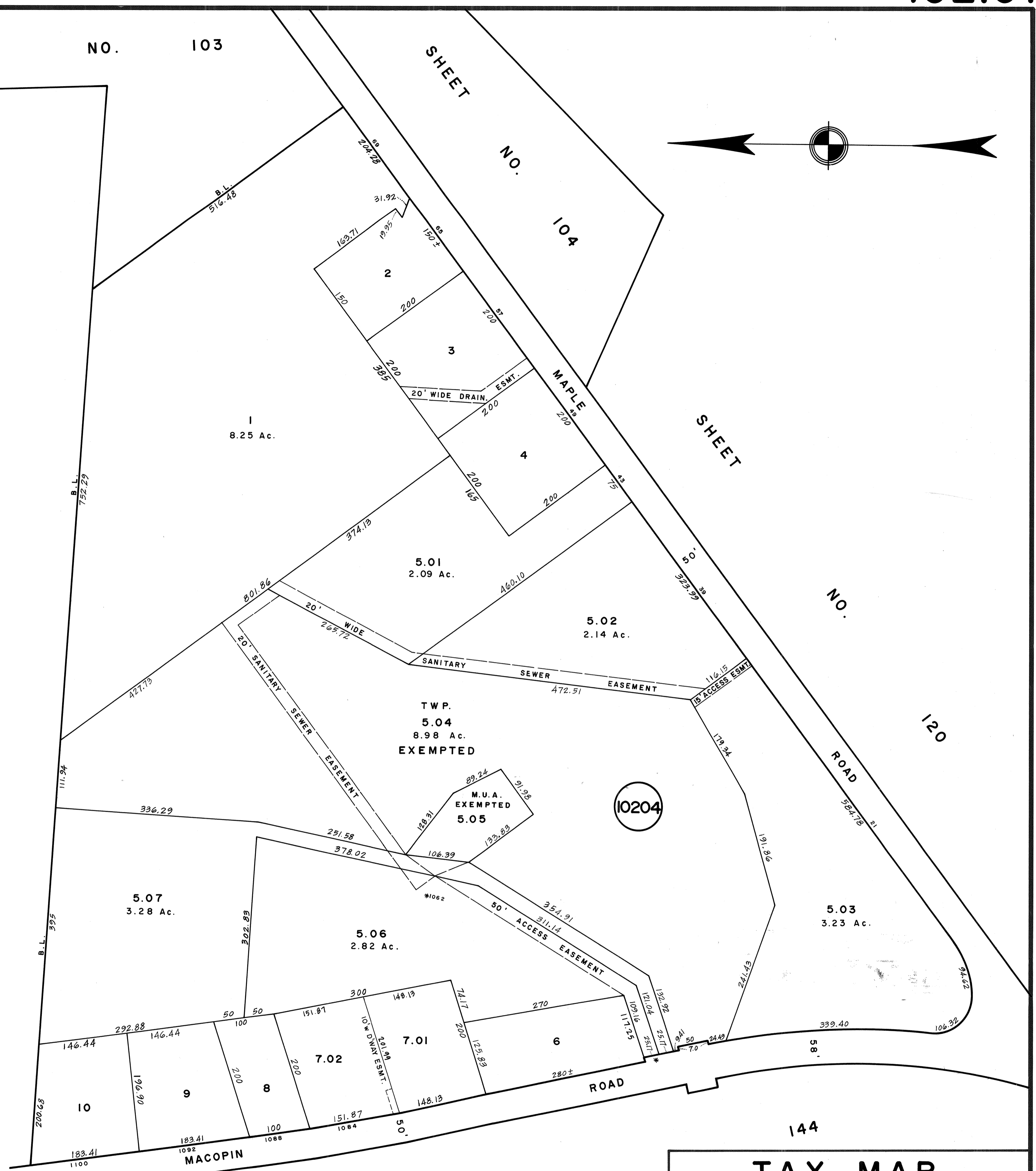
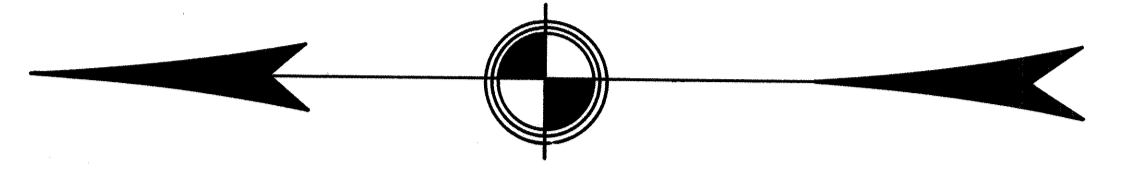


REVISIONS		
DATE	NAME	NO.
3 - 16 - 05	Michael J. Berry	21787
3 - 26 - 10	"	"

SHEET NO. 103

SHEET NO. 104

SHEET NO. 102



NEW JERSEY DEPARTMENT OF THE TREASURY
 DIVISION OF TAXATION
 PROPERTY ADMINISTRATION
 APPROVED AS A TAX MAP PURSUANT TO THE AUTHORITY OF
 N.J.S.A. 54:1-15 & 54:50-1
 FOR THE DIRECTOR, DIVISION OF TAXATION
 THOMAS J. KELLY, CHIEF, LOCAL PROPERTY, FIELD REPRESENTATIVE
 DATE: JUL 11 2011 SERIAL NO. 971

SHEET

NEW JERSEY DEPARTMENT OF THE TREASURY
 DIVISION OF TAXATION
 PROPERTY ADMINISTRATION
 APPROVED AS A TAX MAP PURSUANT TO THE AUTHORITY OF
 N.J.S.A. 54:1-15 & 54:50-1
 FOR THE DIRECTOR, DIVISION OF TAXATION
 JAMES J. COLLIER, CHIEF, LOCAL ASSESSMENT COMPLIANCE
 WILLIAM H. BLACK, SUPERVISING ENGINEER UTILITIES
 DATE: OCT 17 2010 SERIAL NO. 680

TAX MAP
TOWNSHIP OF WEST MILFORD
 PASSAIC COUNTY, NEW JERSEY
 SCALE: 1"=100' DATE: 12-23-98
ARTHUR J. VITALE, P.E., L.S.
 TOWNSHIP ENGINEER
 1480 UNION VALLEY ROAD
 WEST MILFORD