

Cloud 2/23/18



**Tennessee Gas Pipeline
Company, L.L.C.**
a Kinder Morgan company

RECEIVED

FEB 23 2018

TOWNSHIP CLERK
TWP. OF WEST MILFORD

Tennessee Natural Gas Pipeline
1001 Louisiana St Suite 1460C
Houston, TX 77002

**TENNESSEE GAS PIPELINE COMPANY
ROUTINE VEGETATION MAINTENANCE**

Date: February 23, 2018

This correspondence is to provide you with notice that Tennessee Gas Pipeline Company will be performing routine vegetative maintenance activities along their right-of-way (ROW) within the following municipalities: Vernon, West Milford, Ringwood and Mahwah Townships. Enclosed is a map that indicates the location of the ROW within your municipality. The proposed activities will only involve mowing of vegetation and will be performed within Tennessee's existing right-of-way (ROW). This work is expected to commence in August and be completed by December of this year.

If you have any questions in regards to this matter, please feel free to contact the undersigned at 713-420-5027.

Regards,

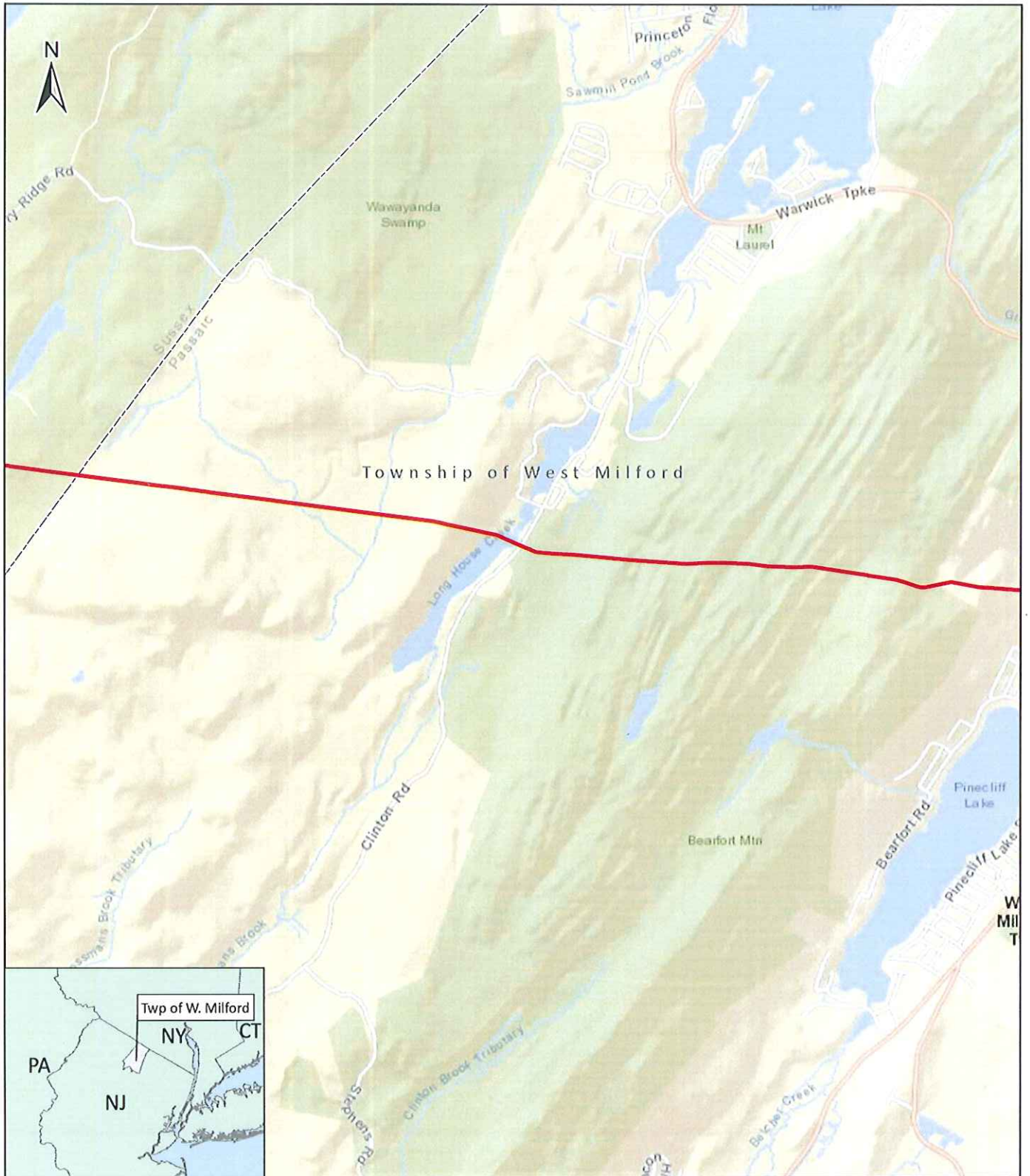
Thomas Shimer | Specialist-Permitting Compliance Sr. I

Enclosures: USGS Project Location Map

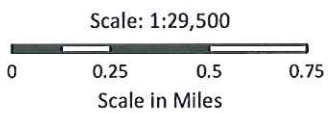
cc:

Vernon Township Clerk w/ encl
Vernon Construction Official w/ encl
West Milford Township Clerk w/ encl
West Milford Construction Official w/ encl

Ringwood Borough Clerk w/ encl
Ringwood Construction Official w/ encl
Mahwah Township Clerk w/ encl
Mahwah Construction Official w/ encl



- Vegetation Maintenance
- Municipal Boundary



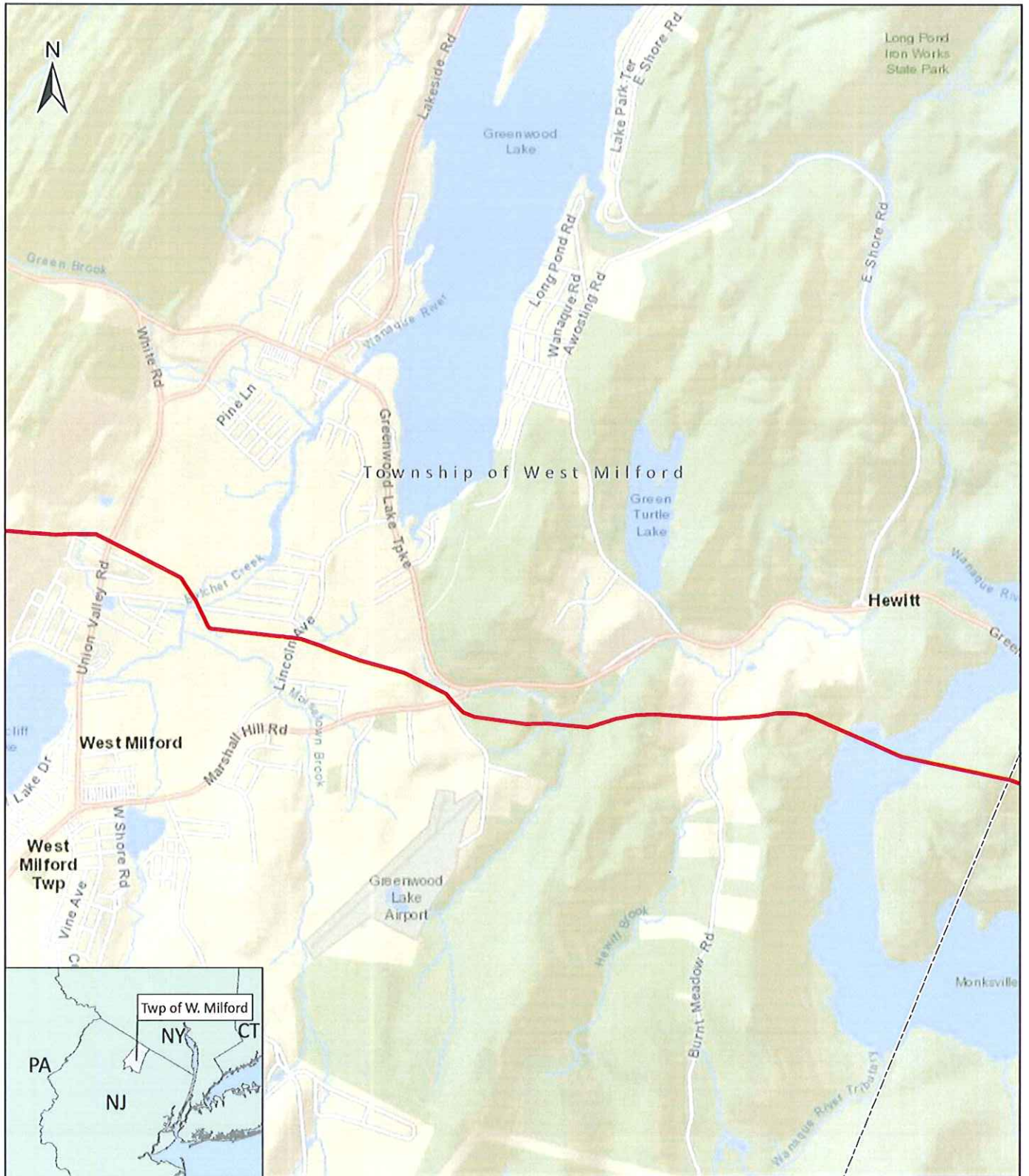
SOURCES:
 Basemap: ESRI World Streetmap.
 Vegetation Maintenance: Kinder Morgan 2017;
 Municipal Boundaries: NJ OIT and OGIS 2016.

	Tennessee Gas Pipeline, L.L.C. <small>a Kinder Morgan company</small>
	Vegetation Maintenance Line 300-1/300-2 Twp. of West Milford

PROJECT OVERVIEW 1 of 2
TOWNSHIP OF WEST MILFORD

PN: 691854
 DATE: 3/27/2017





Long Ford Iron Works State Park

Township of West Milford

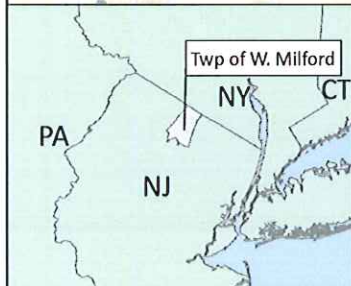
Hewitt

West Milford

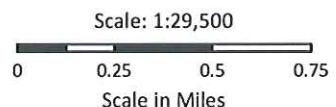
West Milford Twp

Greenwood Lake Airport

Monksville



- Vegetation Maintenance
- Municipal Boundary



Vegetation Maintenance
Line 300-1/300-2
Twp. of West Milford

PROJECT OVERVIEW 2 of 2
TOWNSHIP OF WEST MILFORD

SOURCES:
Basemap: ESRI World Streetmap.
Vegetation Maintenance: Kinder Morgan 2017;
Municipal Boundaries: NJ OIT and OGIS 2016.

PN: 691854
DATE: 3/27/2017

